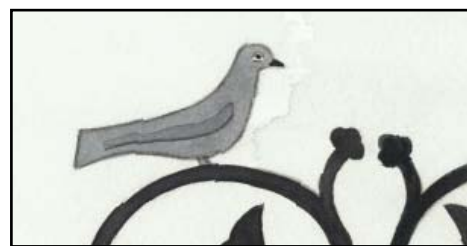


The Wall Paintings (1)

During the middle ages almost every church would have been brightly painted and decorated. Today only a very few churches have any surviving fragments of their medieval decoration. At Lakenheath we are lucky enough to have paintings from at least five different schemes that date between 1220 and 1610.



The very earliest paintings in the church are of Angels that sit high up near the roof. These were painted in about 1220 - but were painted over in about 1350. The Angels were only re-discovered in the 1880s.



Above: A 2nd painting scheme was made in about 1250 and included a picture of a dove. Q2. Can you spot him?



Above: The face of an Angel from the earliest painted scheme in the church. The Angels are painted high up near the roof.

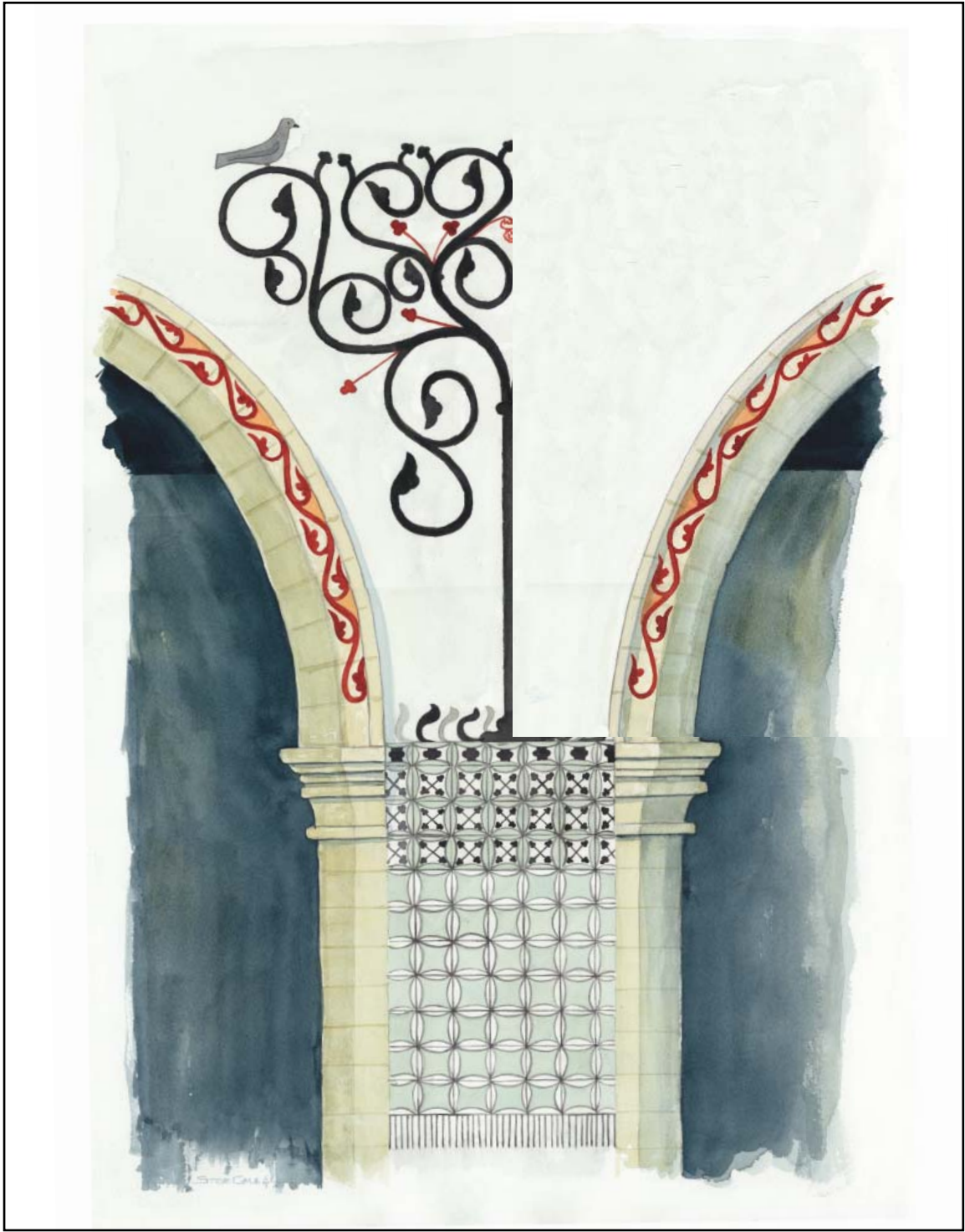
Q1. How many painted Angels can you count?

The paints were made from natural ingredients, such as charcoal and lime, and were painted using animal hair brushes. We know very little about the artists who designed and painted these images. Were they men or women? Were they local? We do not know. All we have of them are the Angels that they left behind.



The Wall Paintings

The reconstruction below shows how we think half of the main pillar might have looked in about 1250. Can you draw the other half?



Answers:
Q1. Originally there were 7 Angels. Today only fragments of 5 remain.
Q2. The Dove can be found on the main pier - as shown in the reconstruction above.

